

OFFERING AWP OPERATORS AND RETAILERS MEI PERFORMANCE

mei | geo® gravity™

MEI GEO® Gravity™ is a multi-width bill validator that provides a higher level of performance for applications that do not require a cashbox. The product is built upon MEI technology, which is relied upon for over two billion transactions per week in over 100 countries.

Proven algorithms have been implemented into MEI GEO® Gravity™ based on the ability of MEI CASHFLOW® SC to improve profitability in casinos, kiosks, self-checkout equipment and smart safes worldwide. That expertise can now be applied in additional market segments — expanding expectations for acceptance rates, security and jam performance where MEI hasn't previously participated.

MEI Gravity™ is the initial product from the MEI GEO® portfolio. The stackerless offering, like the entire product family, is designed to provide a newfound value for applications that historically had to settle for low cost alternatives. The introduction of MEI GEO® product line allows AWP operators and retailers to select the right balance of performance and price for every application.

The reliability inherent in MEI's signature yellow coloring will be evident to an entire group of new customers. And, as always, the MEI value proposition will be apparent with reduced maintenance costs and increased profitability.

Please contact your MEI sales associate to specify MEI GEO® Gravity™ when the solution doesn't require a cashbox.



mei

www.meigroup.com

Proven performance. Increased profits.

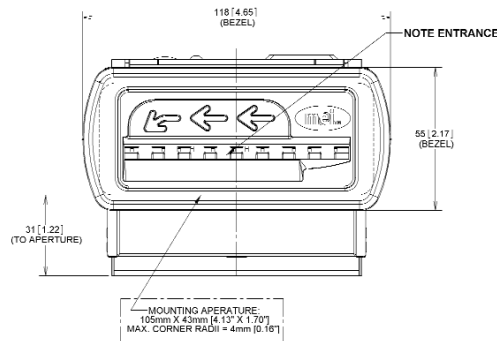
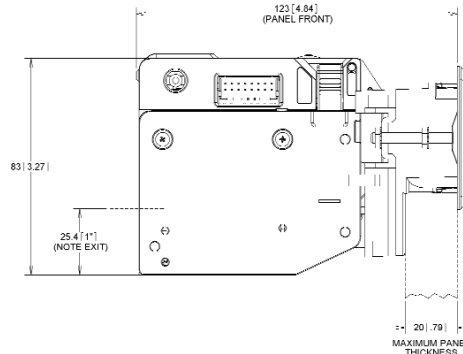
TECHNICAL SPECIFICATIONS

Bill width:	up to 85mm
Operating voltage:	12VDC (- + 10%), 500ma: 6 Watts
Operating temperature:	5 to 55 C
Maximum humidity:	90%
Protocols:	ccTalk®, Serial, Pulse, Parallel (Binary and BCD), NISR
Dimensions:	w x d x h: 96mm x 91mm x 80mm
Bezel/ mounting options:	standard and glass door
Acceptance rate:	95% first pass acceptance
Warranty:	1 year

MEI GEO® SL Part Number Breakdown

SL S A 1

a	b	c	d
Series	Model	Bezel/ Faceplate Type	Options
SL (GEO® Stackless)	S=Standard R=RS232 C=ccTalk® A=ccTalk® [AWP]	A=Standard Bezel/FP, up B=Glass mounting Bezel/FP D=Glass mounting Bezel/FP (Metal)	O=None 1=Cotton Catcher 2=MAS



MECHANICAL ANTI-STRINGING (MAS) DEVICE

The history of mechanical manipulations in the AWP market space led MEI to develop an additional layer of protection against fraud. A mechanical anti-stringing device (MAS) can be attached to MEI GEO® Gravity™ for use in markets susceptible to criminal activity.



MEI LOCATIONS:

UNITED STATES

Corporate Headquarters
1301 Wilson Drive
West Chester, PA 19380
Telephone: 1 610 430 2700
Facsimile: 1 610 430 2694
Customer Service: 1 800 345 8215
Technical Support: 1 800 345 8172

Las Vegas, NV

Telephone: 1 702 873 4866
Facsimile: 1 702 873 6401

UNITED KINGDOM

Telephone: +44 (0) 118 938 1100
Facsimile: +44 (0) 118 938 1120

SWITZERLAND

Telephone: +41 (0) 22 884 0505
Facsimile: +41 (0) 22 884 0504

AUSTRALIA

Telephone: +61 2 8875 7753
Facsimile: +61 2 8875 7957

CANADA

Telephone: +1 905 492 0851
Facsimile: +1 905 492 0853

JAPAN

Telephone: +81 3 3221 8466
Facsimile: +81 3 3221 8465

SPAIN

Telephone: +34 91 749 7516
Facsimile: +34 91 749 9356

FRANCE

Telephone: +33 (0) 1 57 32 30 23
Facsimile: +33 (0) 1 55 69 56 10

GERMANY

Telephone: +49 695 007 0420
Facsimile: +49 695 007 0421

ITALY

Telephone: +39 02 69633722
Facsimile: +39 02 69633723