

## MANAGING THE FIELD BASE FOR OPTIMUM PERFORMANCE



MEI CASHFLOW® STS (support and test systems) gives you complete control of your environment, regardless if you are an equipment manufacturer or a major operator. It provides a simple, easy-to-use set of tools that you can configure and control to meet your unique support needs.

MEI CASHFLOW® STS supports a full range of configuration and software update functions with easy-to-use software and handheld tools, performance management and reporting and modular product repair.

Benefits for you as an original equipment manufacturer:

- Minimize inventory by profiling standard units
- Fast downloads for an "in-line" manufacturing process

Benefits for you as an operator:

- Fast and easy updates in your MEI field base for
  - › currency data
  - › configuration data
  - › software
- Monitor performance of your MEI units\*
- Diagnostics for modular repair with minimum spares

Please contact your MEI sales associate to learn how MEI CASHFLOW® STS can be implemented into your overall security system and into your operation's profitability.



[www.meigroup.com](http://www.meigroup.com)

Proven performance. Increased profits.

## BACK ROOM SUPPORT

### MEI CASHFLOW® STS SPECIFICATIONS

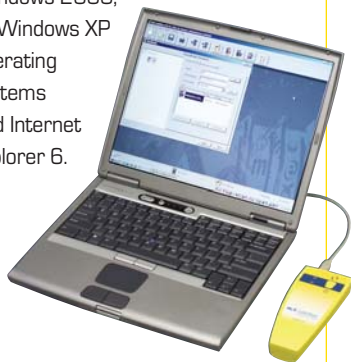
PN: 252069074

- Supports MEI CASHFLOW® products
- Reconfigure for new currency data
- Instant solutions to security problems
- Collects and reports audit data\*
- Interfaces/controls MEI CASHFLOW® programming module
- Diagnostics servicing
- Recommended System Configuration:

› **Processor:** Intel Pentium II (200Mhz or higher recommended); RAM: 128 MB or greater; Fixed Disk Storage: 36 MB before installation and 16 MB after installation.

› **Monitor:** Super VGA at 800 x 600 resolution with 256 colors or greater.

› **Required Software:** Microsoft Windows SE, Windows Me, Windows 2000, or Windows XP operating systems and Internet Explorer 6.



### MEI CASHFLOW® PROGRAMMING MODULES GENERAL INFORMATION

- Pocket-sized handheld programmers
- Download new software, currency or configuration data in one step
- Designed for use with minimal training
- Both use standard USB cables

#### MEI CASHFLOW® Programming Module (USB) PN: 760591001

- Shipping weight: 0.8 lbs/0.4 kg
- Supports all MEI CASHFLOW® SC bill acceptors
- Automatic collection of performance-monitoring data
- One-button programming—just plug, push and unplug
- Operates on two standard AA batteries



#### MEI CASHFLOW® Programming Module (HII) PN: 725934001

- Shipping weight: 0.6 lbs/0.3 kg
- Supports all MEI CASHFLOW® coin products
- Zero-button programming—just plug in for automatic download



### MEI LOCATIONS:

#### UNITED STATES

**Corporate Headquarters**  
1301 Wilson Drive  
West Chester, PA 19380  
Telephone: 1 610 430 2700  
Facsimile: 1 610 430 2694  
Customer Service: 1 800 345 8215  
Technical Support: 1 800 345 8172

#### Las Vegas, NV

Telephone: 1 702 873 4866  
Facsimile: 1 702 873 6401

#### UNITED KINGDOM

Telephone: +44 (0) 118 938 1100  
Facsimile: +44 (0) 118 938 1120

#### SWITZERLAND

Telephone: +41 (0) 22 884 0505  
Facsimile: +41 (0) 22 884 0504

#### AUSTRALIA

Telephone: +61 2 8875 7753  
Facsimile: +61 2 8875 7957

#### CANADA

Telephone: +1 905 492 0851  
Facsimile: +1 905 492 0853

#### JAPAN

Telephone: +81 3 3221 8466  
Facsimile: +81 3 3221 8465

#### SPAIN

Telephone: +34 91 749 7516  
Facsimile: +34 91 749 9356

#### FRANCE

Telephone: +33 (0) 1 57 32 30 23  
Facsimile: +33 (0) 1 55 69 56 10

#### GERMANY

Telephone: +49 695 007 0420  
Facsimile: +49 695 007 0421

#### ITALY

Telephone: +39 02 69633722  
Facsimile: +39 02 69633723

**mei**

[www.meigroup.com](http://www.meigroup.com)

**Proven performance. Increased profits.**

MEI CASHFLOW is a registered trademark of MEI. Information is subject to change without notice. MEI has made every effort to assure that the information in this document is accurate. However, we cannot be held responsible for any errors or omissions.

\*On select MEI products

MEI is ISO 9001:2000 certified.

©2008 MEI. All rights reserved.

